

PDF Creator Installation, Configuration & Printing Guide

Installation

<http://www.pdfcreator.com/download>

Follow this link to download PDF Creator 2.2



1) Save the program to a local hard drive (i.e. C: drive)

2) Open folder and double click on

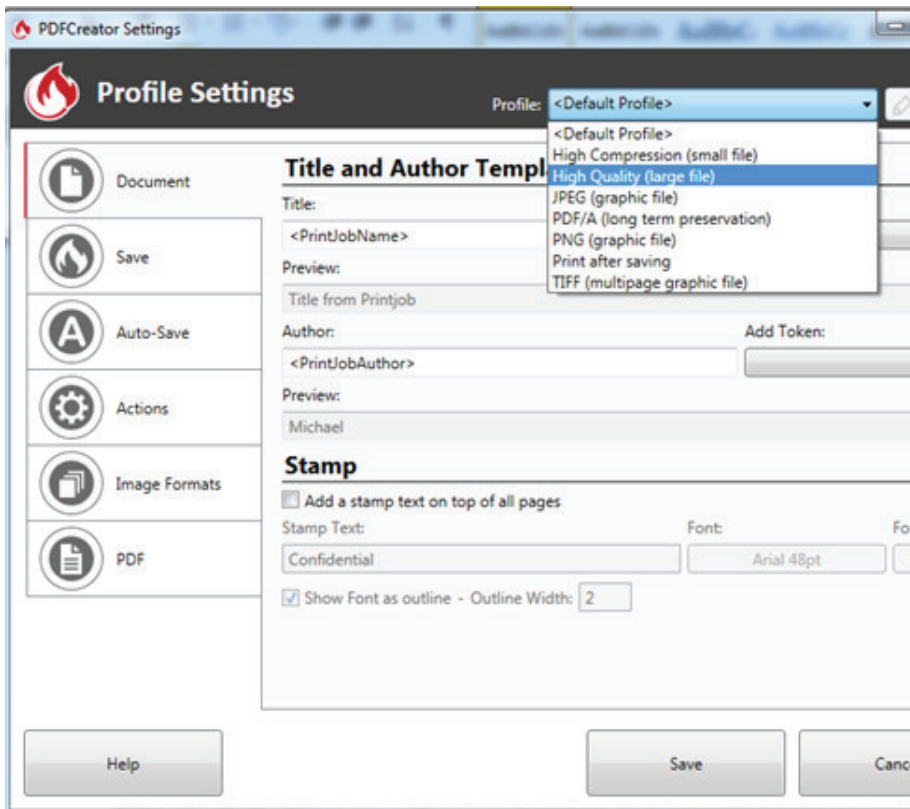
PDFCreator-2_2_2-setup.exe 

3) Once installed PDFCreator should install a shortcut on your Desktop.

Configuring the settings

1) Open the PDFCreator program and click on Profile Settings





<Default Profile>

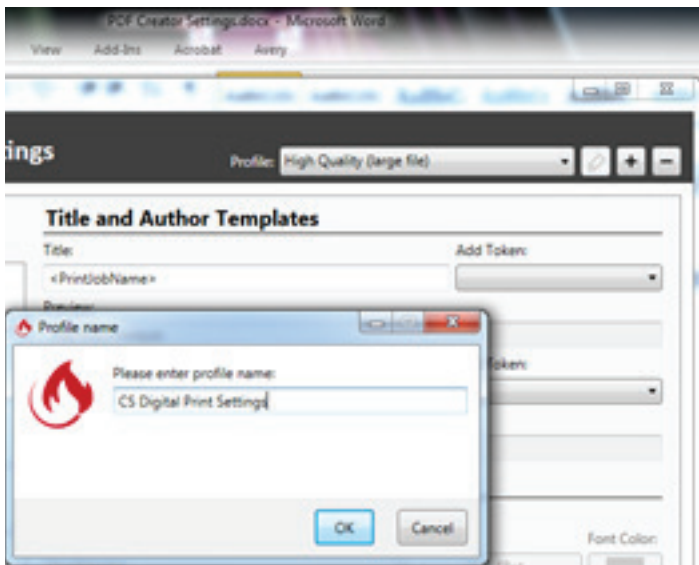
The default profile should define your frequently used settings. It can not be renamed or deleted to ensure at least one profile reference.

Do not use High Compression (small file). This profile was made to generate small file sizes with a loss of quality due to the high compression. Ideal to share early concepts etc.

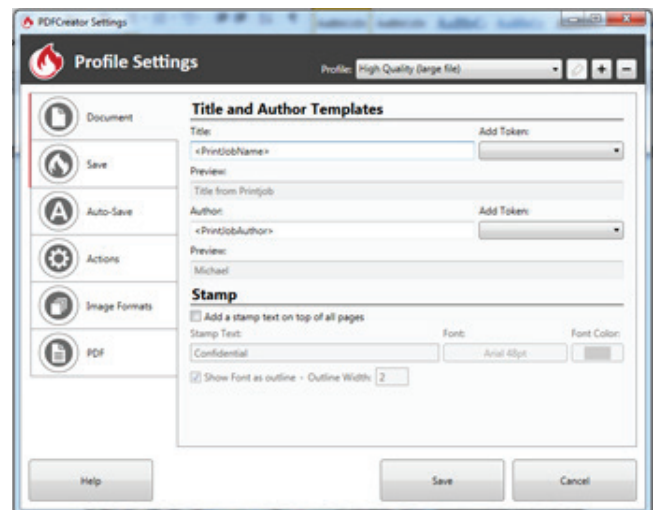
Select High Quality (large file)

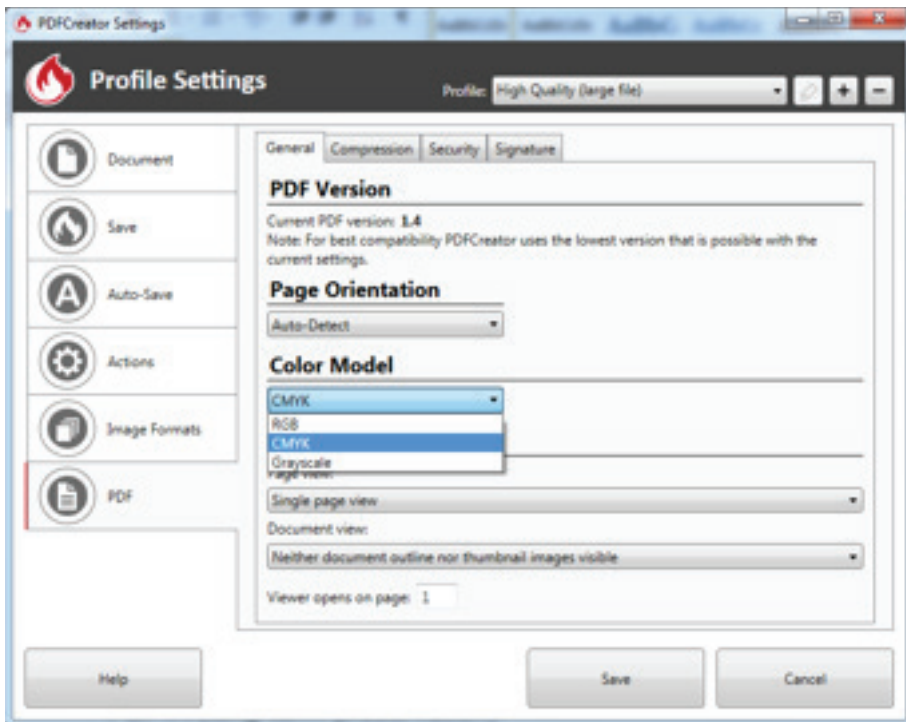
Use this profile to keep the highest possible quality depending on your original, limited by the capacity of the created file format.

Note: PDFCreator can not increase but maintain the quality.



2) Once you've selected the High Quality from the Profile, click on the + to add a new profile. Call this profile CS Digital Print Settings

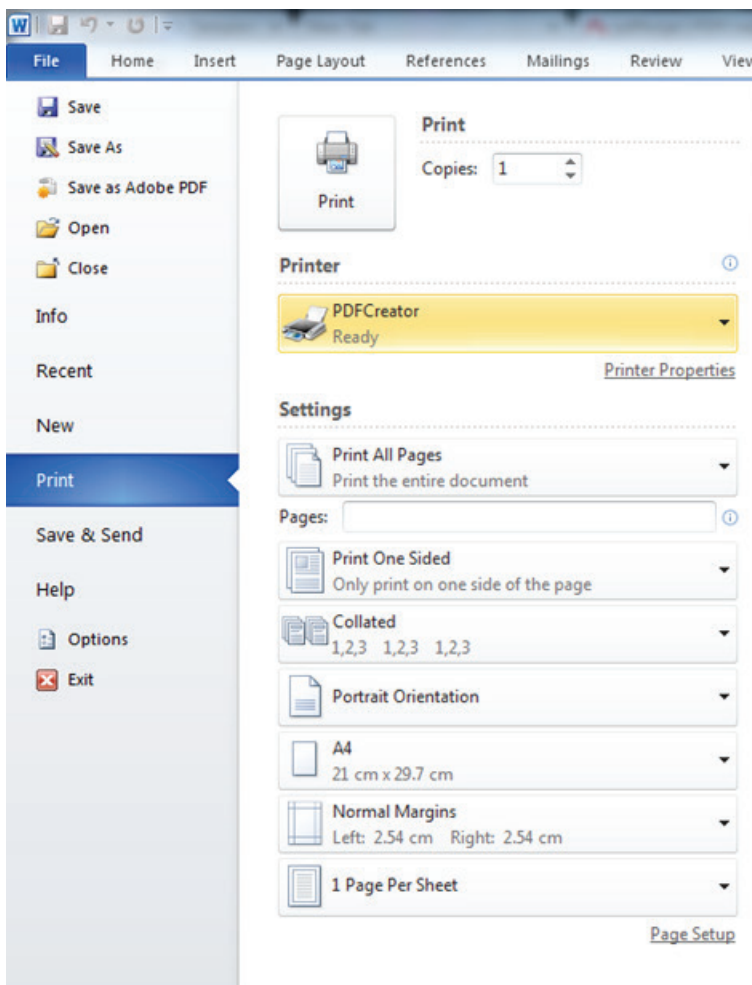




3) We will use most of the settings used by the High Quality profile.

Click on the PDF selection and in Colour Model - select CMYK

Then Save



Creating a PDF with PDFCreator couldn't be easier. Just follow the steps below and you will be creating PDFs in no time. There are three ways to create a PDF in PDFCreator: Printing, Windows Explorer Printing and Drag and Drop.

Method 1: Printing (recommended)

- 1) Open the document that you wish to create a PDF from (i.e. Microsoft Word, CorelDraw etc)
- 2) Click File>Print
- 3) Choose PDFCreator as the printer





4) Click Properties, then select CS Digital Print Print Settings in the Profile selection.,

5) Click Save, then Print again to print the document to PDF.

Please note that you may have to select these settings each time you print to Adobe PDF. Simply follow steps 1 to 5 above.

Method 2: Windows Explorer Printing

- 1) Right click on any document and select Create PDF with PDFCreator.
- 2) If PDFCreator is not your default printer, it will ask to become it temporarily in order to complete the request. It will return the default printer status to the original printer once the process has been completed.
- 3) Proceed with step 4 of method 1.

Method 3: Drag and Drop

- 1) Take a printable file and drop it on a PDFCreator link (e.g. the icon on the desktop) or (if PDFCreator is open already) drop it on a PDFCreator window.
- 2) Proceed with step 2 of method 2.

JPEG (graphic file)

This profile generates a JPEG file. A popular graphic file format especially for web usage, with a good compromise between file size and quality.

PDF/A (long term preservation)

Create a file that fulfills the ISO-standard of Portable Document Format (PDF) for digital long term preservation of electronic documents.

PNG (graphic file)

PNG is a graphic file format, without a loss of quality due to compression.

Print after saving

After saving, this profile automatically launches the printer dialog to print the document with a further printer. You can choose between any printer installed on your computer.

TIFF (multiple graphic file)

TIFF is a graphic file format with the main advantage to save multiple images (respectively pages) into one file.